

# 中国建材通讯

CNBM

2014 2 77

宋志平接受央视《对话》栏目专访

中国建材集团：尝试混合所有制

CTC

0.07% 第九届中国(湖南) 507.00 -0.19%



News in pictures



- 1.
- 2.
- 3.

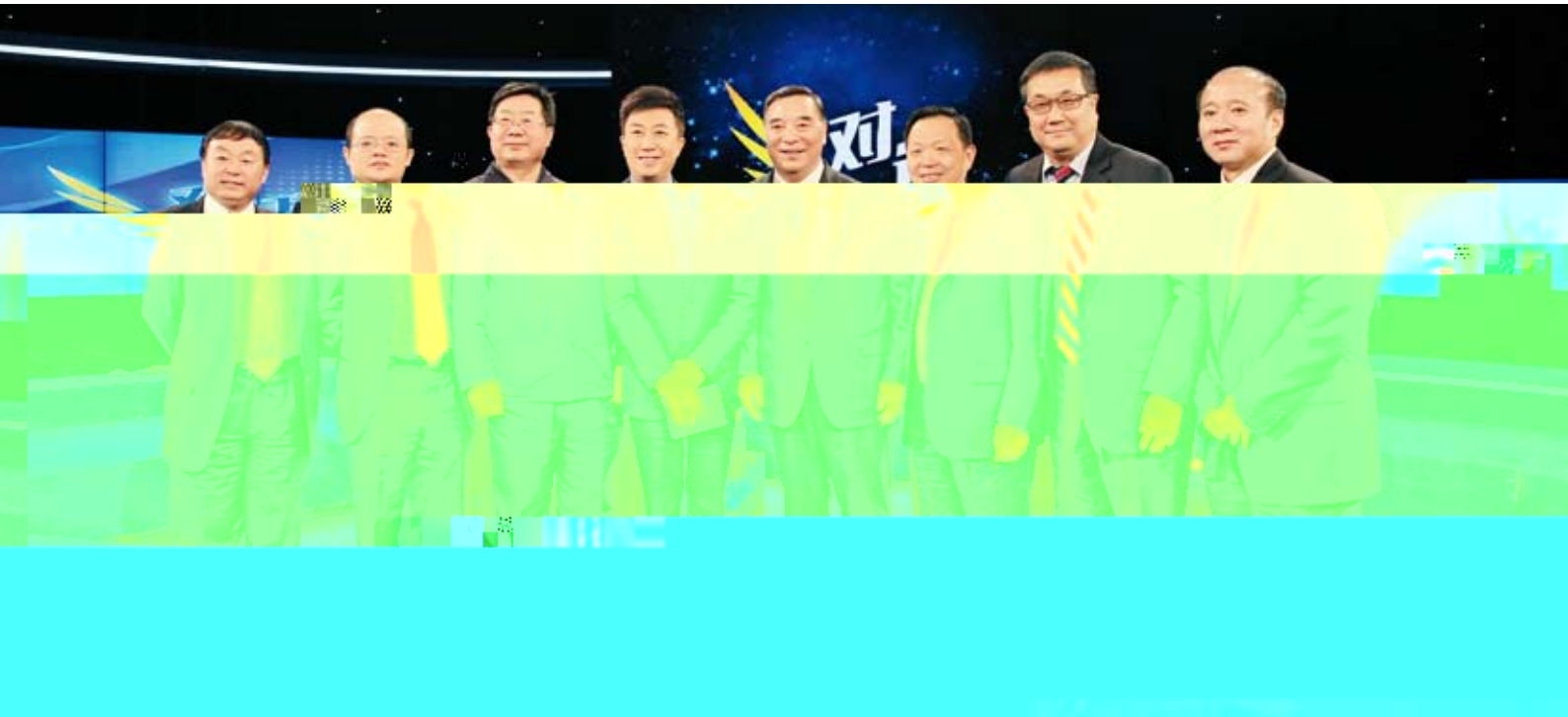
Mr.Shafei





# Contents

2014 2 77



---

1

4

6

8

2014

9

" "

---

10

媿媿

, ,

x

21

25

17

2 19

100036

010- 68138072 / 68138057

010- 68138088

zhgjctx@126.com

27

, ,



31

44

35

46

4

40

41

48

42 CTC

\* ).

~ , ,

y

y





" "

" "

26

12

2013

6

" "

" "

2013

68.9%

65.8% 15.8%

14.5% 20.3% 49.7%

100



“ ”



2 18

2014

“ ”

2013

2014

6

2014

2013

2013

“ ”



“ ”

2013 2013

r01 2014

..  
U

r r U

»



2014

2013

“ ”

2 13

2014

”

2013

”

2014

2014

2013

2014

”

”

”

”

2014

2013



2013	"	"	1000	1262	373
63.6%	848		4	2013	
3231	589			20	

2013	"	"	1000	"	"
1262	373		63.6%		"
848	4				"
E6					"
		E6			

2013			3231	
	589		20	
		139	2012	2013
74%				
2013	85	173		
700				



专访中国建材集团董事长、国药集团董事长

“ ”

2013



y

y

y

^ %o y  
"

"

"

"

y

y

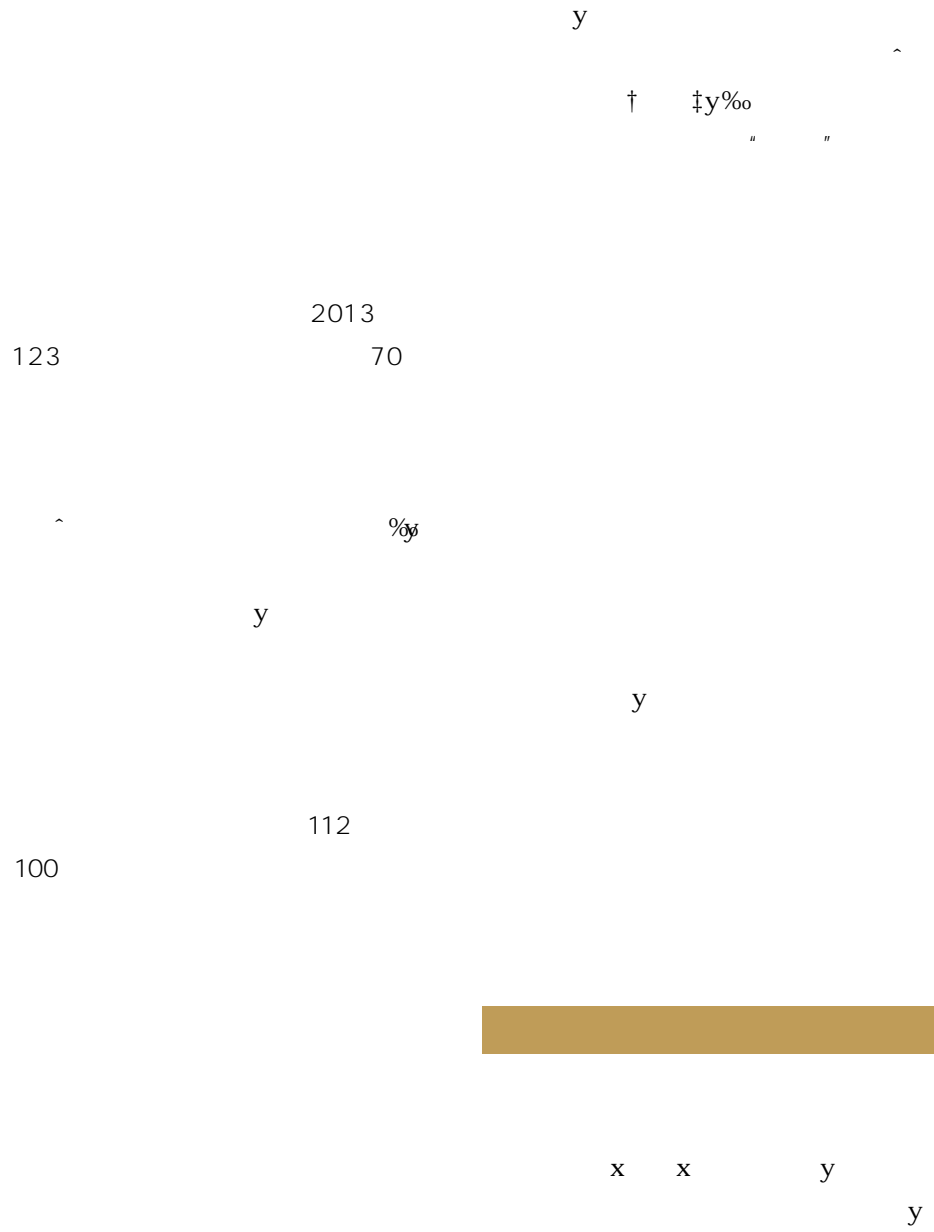
y

%o

%o y

y

x





y

GDP 70%

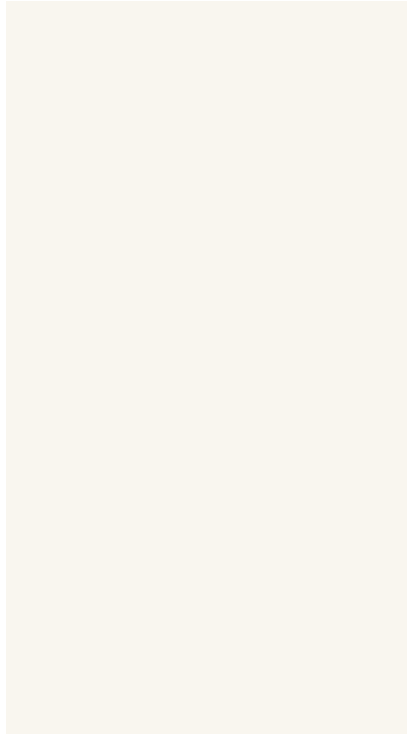
y

"

"

y

y

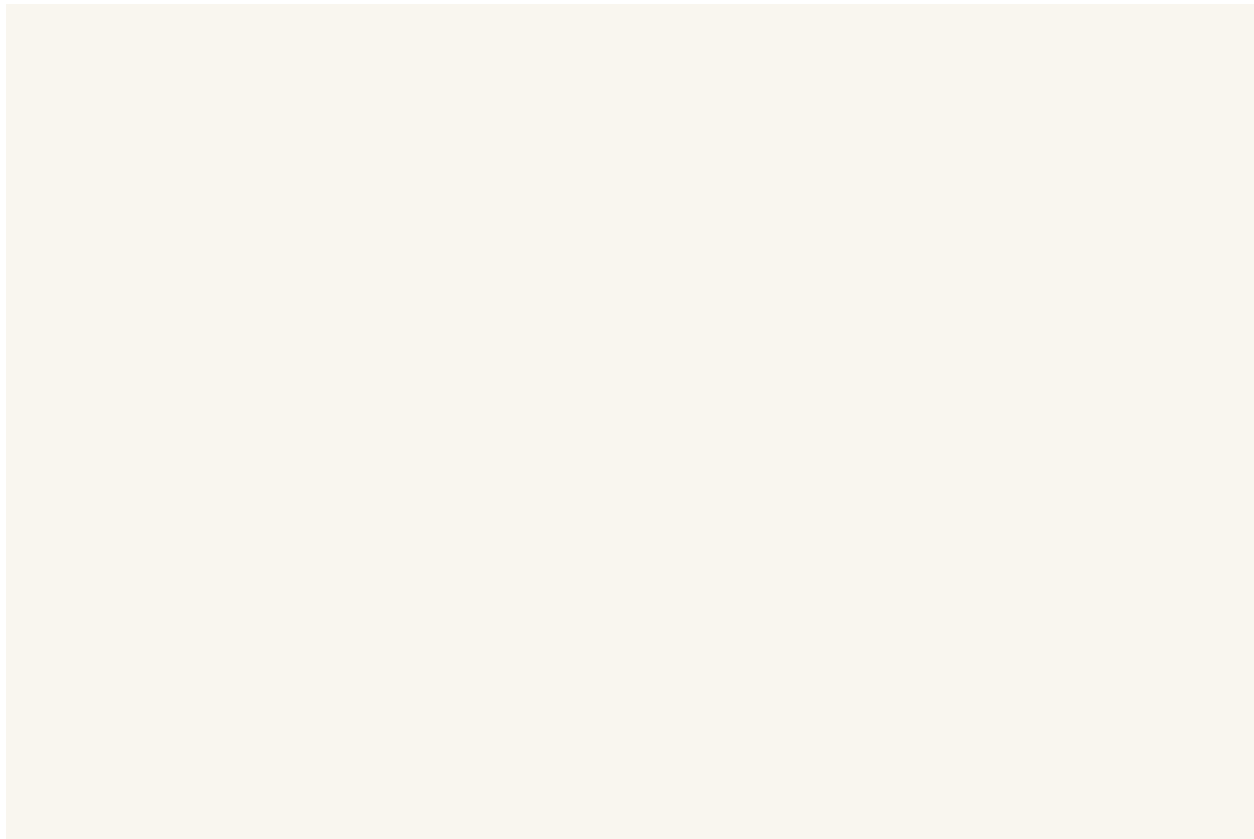












\*((0

y

“y”

y

”

y

OK



5% 6%



20% 25%

30%

20%

û

y

y

y

y



, “  
y

y

y

x

y

58

58

y





"

"



"	"	"	"
"		"	
"	4	"	"
"	"	"	"
"	"	"	"
"	"	"	"
"	"	"	"
"	"	"	"
"	"	10	5000
"	"	"	2000
"	"	"	"
"	"	"	"
"	60%	"	"
"	"	"	"
"	600	"	300
"	"	"	"
"	"	"	45
"	"	"	"
"	169	"	"
"	"	"	"
"	"	"	"



"  
" "  
" "  
" "  
2000  
" 2000  
5000 " "  
500  
"  
"  
" "  
" "  
" "  
" "  
" "  
" "  
" "  
" "  
" "  
2011 2014 50  
300 300  
90% "  
" 500 "  
" "  
" "  
" "  
" "



“ ” “ ” “ ” “ ”



“ ”  
“ ”

45 200

“ 2002

“ ”

“ ” “ ” “ ” “ ” “ ” “ ” “ ”

“ ” “ ”

20 70

9

Lafarge

Holcim

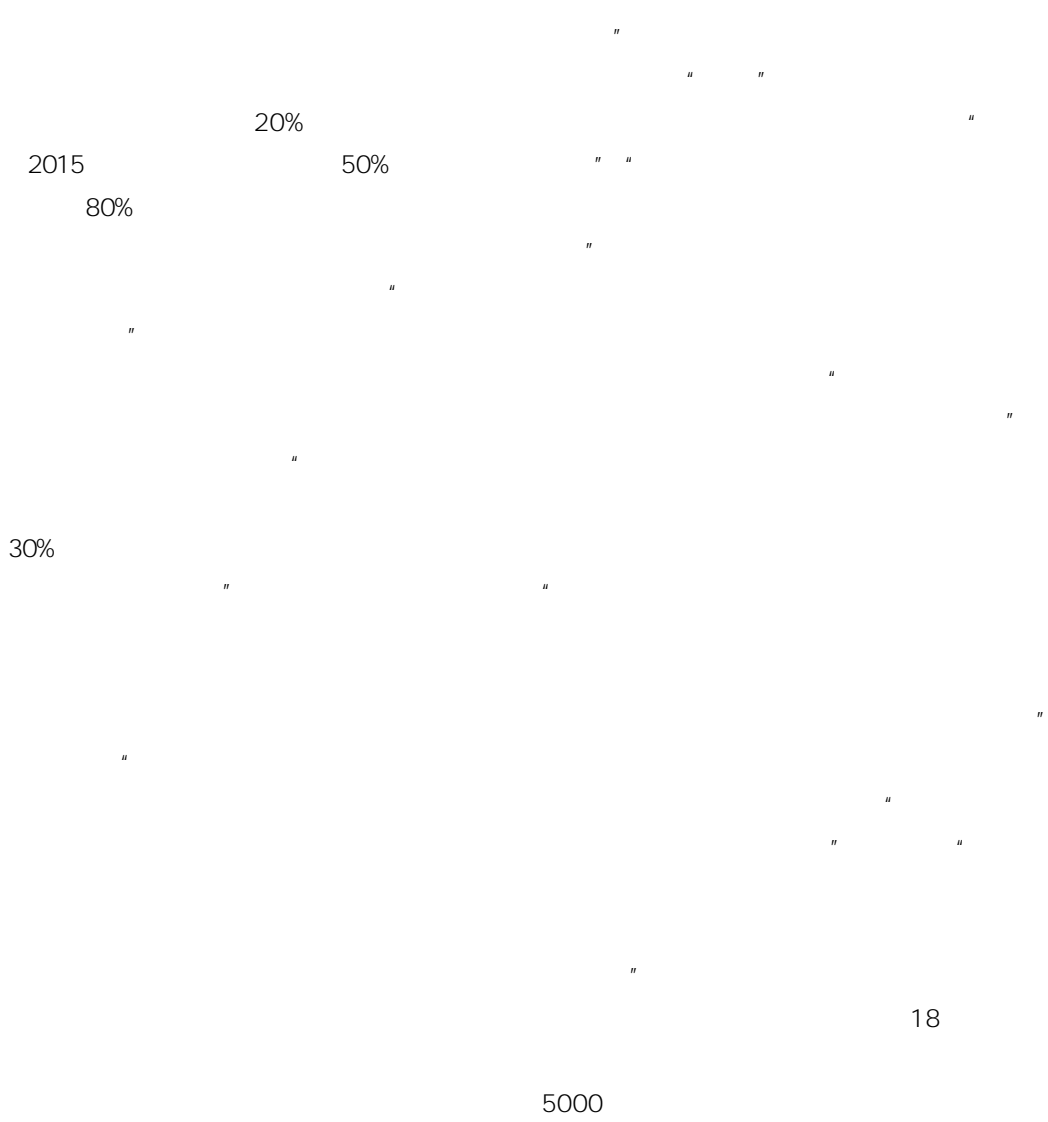
2006

“ ”

“ ”

“ ”

“ ”





GLOBAL COMPACT NETWORK CHINA  
ANNUAL CONFERENCE



— —

$\hat{z}$  )111 )  
 $\%o$  x  
 $*((( /$  x  
 $x$  x  
 $y$  x  
 $x$  x  
 $\hat{y}$   $\%o$  y x  
 $x$  y  
 $*0,$  x  
 $y^* *-$   $\hat{z}$   $\%o$   
 $y$



# GLOBAL COMPACT NETWORK CHINA ANNUAL CONFERENCE

			"		"
"	"			2007	"
"	"		"	9	"
				5000	
20	143				
				1600	60
		"	"		
		30		40%	10%
					2014
			GB175		4
				P.C	32.5
			3.5		





# GLOBAL COMPACT NETWORK CHINA ANNUAL CONFERENCE



1995

" " Global Compact

1999 1

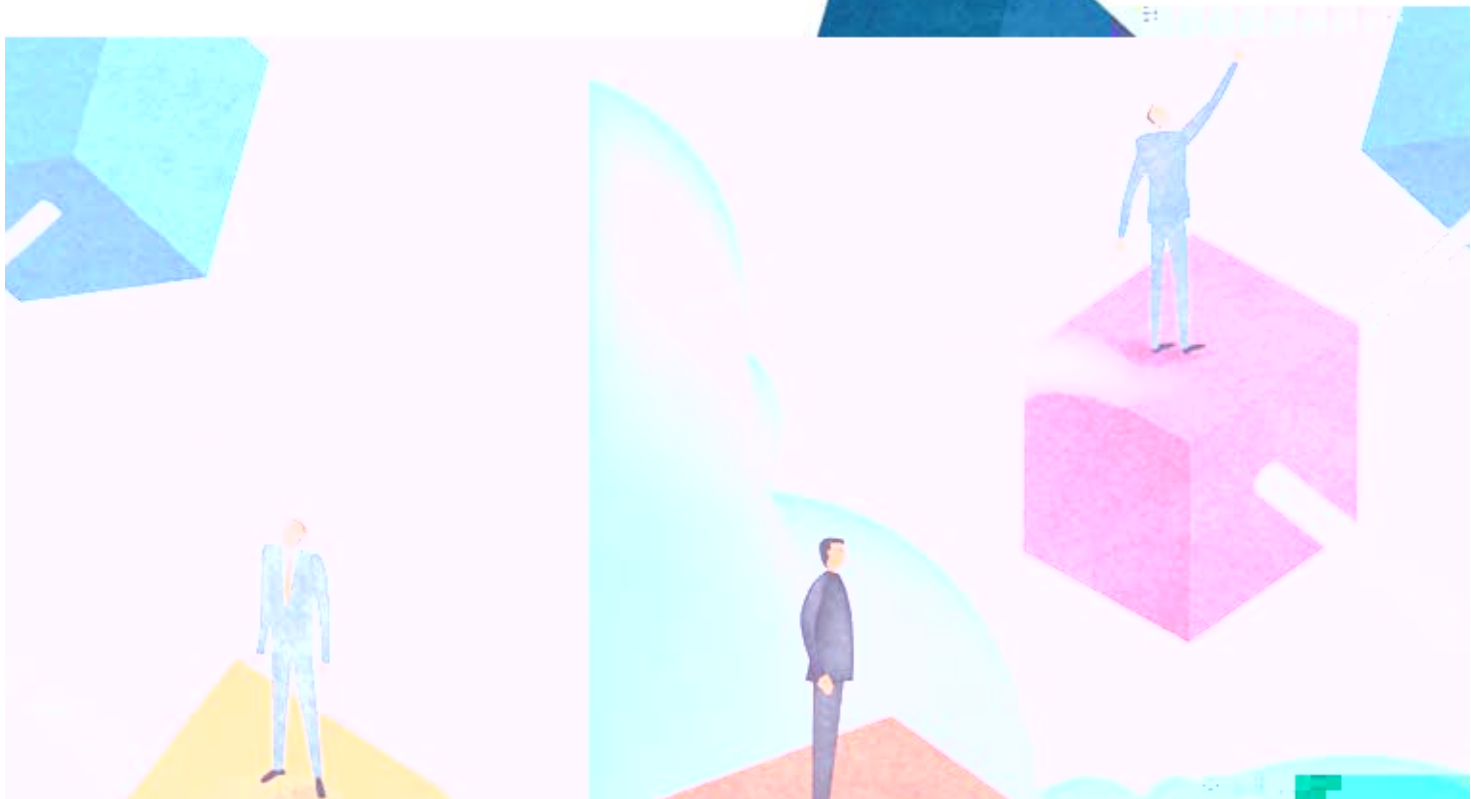
2000 7



" "

- 1.
- 1
- 2
- 2.
- 3
- 4
- 5
- 6
- 3.
- 7
- 8
- 9
- 4.
- 10





" "



	1985		2008		
				"	
				"	
		76%			
140	2013		989	"	"
	40		47		
	500				
3		500	37		
"		"			
				"	"
				"	"
90		"			
" "	"		212	799	794
			"		
"	"				
			213		1003
	2002				



ASTORIA

ASTORIA

SSA

ASTORIA

WLH

3.

5  
90%

3.5

"

"

1000

5000

700



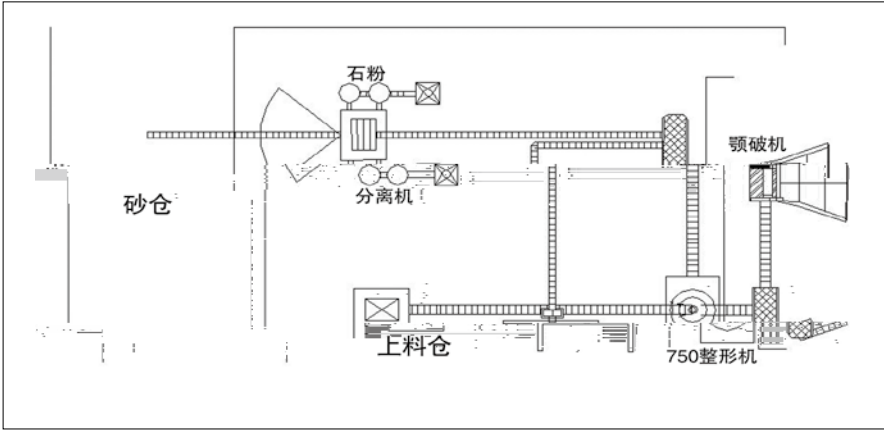
“ ” ”

“ ”

“ ”

“ ”

“

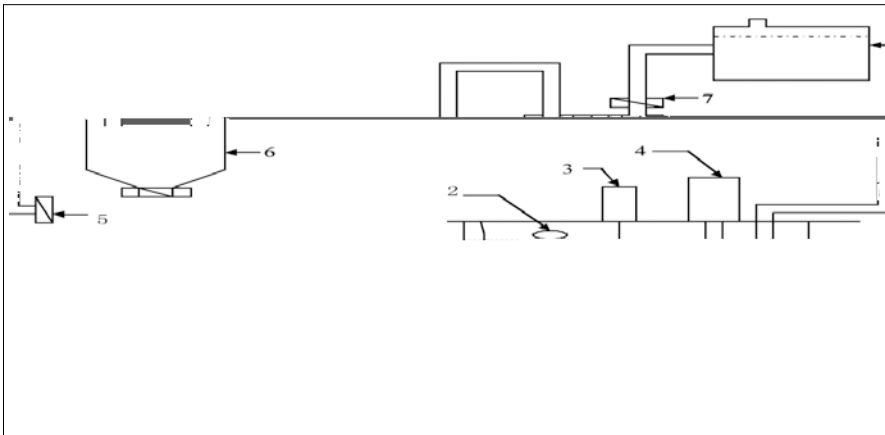


2007

" " "

2~4





1000m<sup>3</sup>  
12m<sup>3</sup>  
2m<sup>3</sup>      100 m<sup>3</sup>  
10000      2000  
3.4

3.2

GB/T 25177- 2010  
GB/T 25176-  
2010      2010 9 26  
2011 8 1  
JGJ/T204- 2011  
2011 4 22      2011 12 1

"      "  
100 m<sup>3</sup>  
2000  
500

3.3

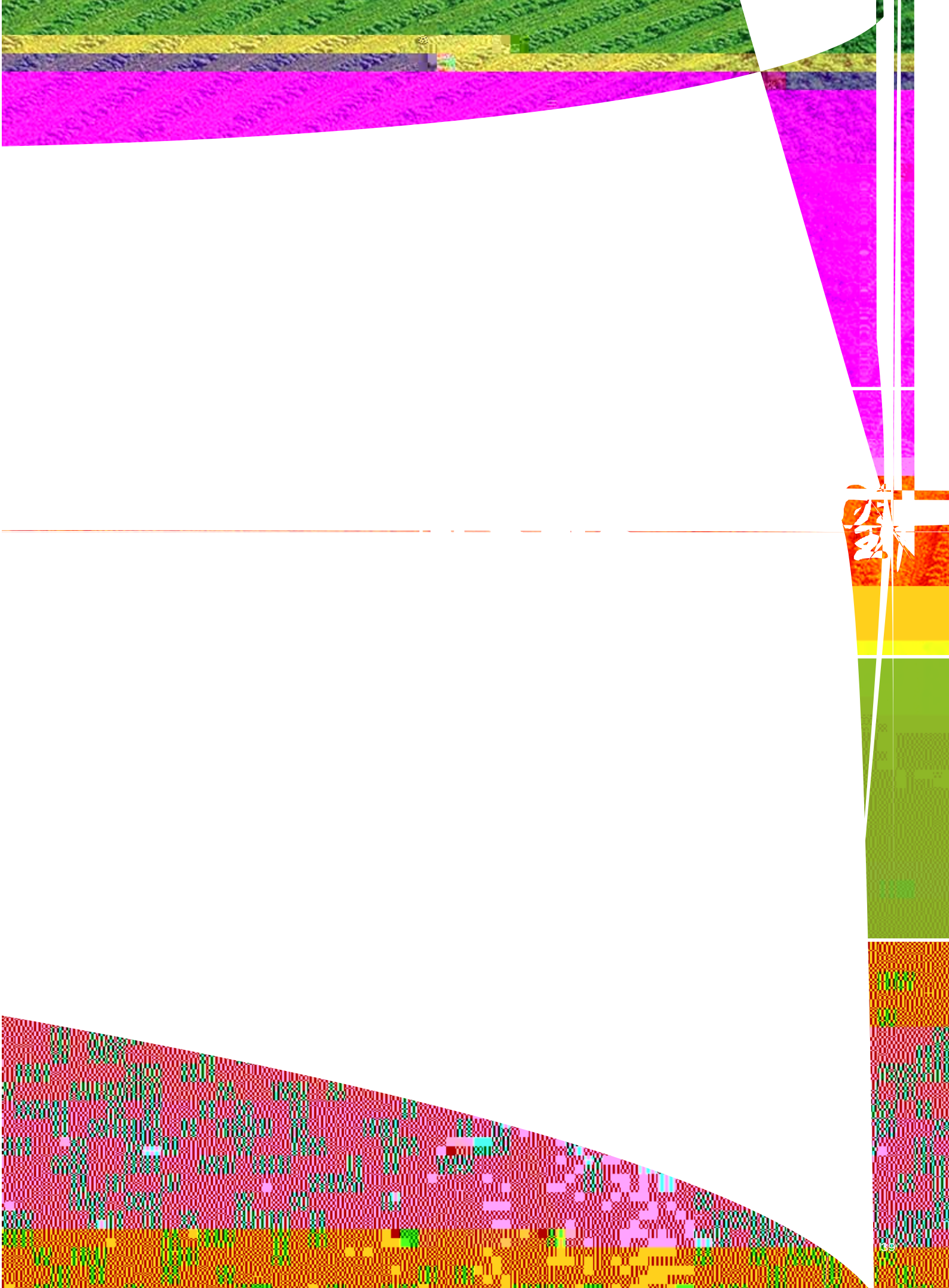
3.1

"      "      "  
"

ERP













2008 CTC

" "

2005 9 CTC

CTC

CTC

CTC

CTC

CTC

"

"

2011 12 15 CTC

— —

"

"

"

"

CTC

CTC





2 26

M

€



03

2 17

Harald Justnes

Justnes

Herfort

Wallevik

Etsuo Sakai

Shunsuke Hanehara

Harald

Duncan

Olafur



Karen Scrivener

"

Harald Justnes

— —

Duncan Herfort

"

Etsuo Sakai

"

"

Schneider

Martin

"

"

2015

04

2 14





摄影欣赏  
中国建材集团

